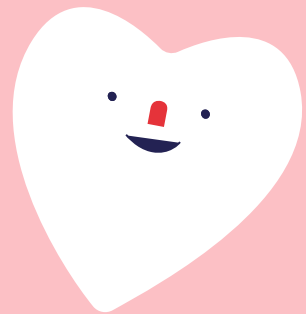


Your guide to cervical screening



What is cervical screening?



Often called a smear test, cervical screening checks the health of the cervix. The cervix is the opening of the womb from the vagina.

It's not a test for cancer, it's a test to help prevent cancer.



Cervical screening is offered to women and people with a cervix aged 25–64 in the UK.

It is offered every three years for those aged 25–49, and every five years for people aged 50–64.

People will be invited by letter.

During the screening appointment, a small sample of cells are taken from the cervix.

The sample is checked for certain types of human papillomavirus (HPV) that can cause changes to the cells of the cervix.

If these types of HPV are found, the sample is then checked for any changes in the cells of your cervix.

These can then be treated before they get a chance to turn into cervical cancer.



What is cervical cancer?

Cervical cancer is when abnormal cells in the lining of the cervix grow in an uncontrolled way.

The cervix is part of the female reproductive system. It is the opening to the vagina from the womb.

The main symptom is unusual bleeding from the vagina. Finding changes in the cells through screening can help to prevent cancer developing.

What is HPV?

Human papillomavirus or HPV is the name of a very common group of viruses.

They do not cause any problems in most people, but some can cause abnormal changes to the cells of the cervix.

HPV testing is part of cervical screening.

tough cookies education
www.toughcookiesed.co.uk

Cancer Champions is a movement aiming to bring 20,000 local people and organisations together to help prevent cancer across Greater Manchester and support people who have been diagnosed.

Thank you for taking part in our workshop.

For more information about becoming a cancer champion go to: www.cancerchampionsgm.org.uk

**ANSWER
CANCER**